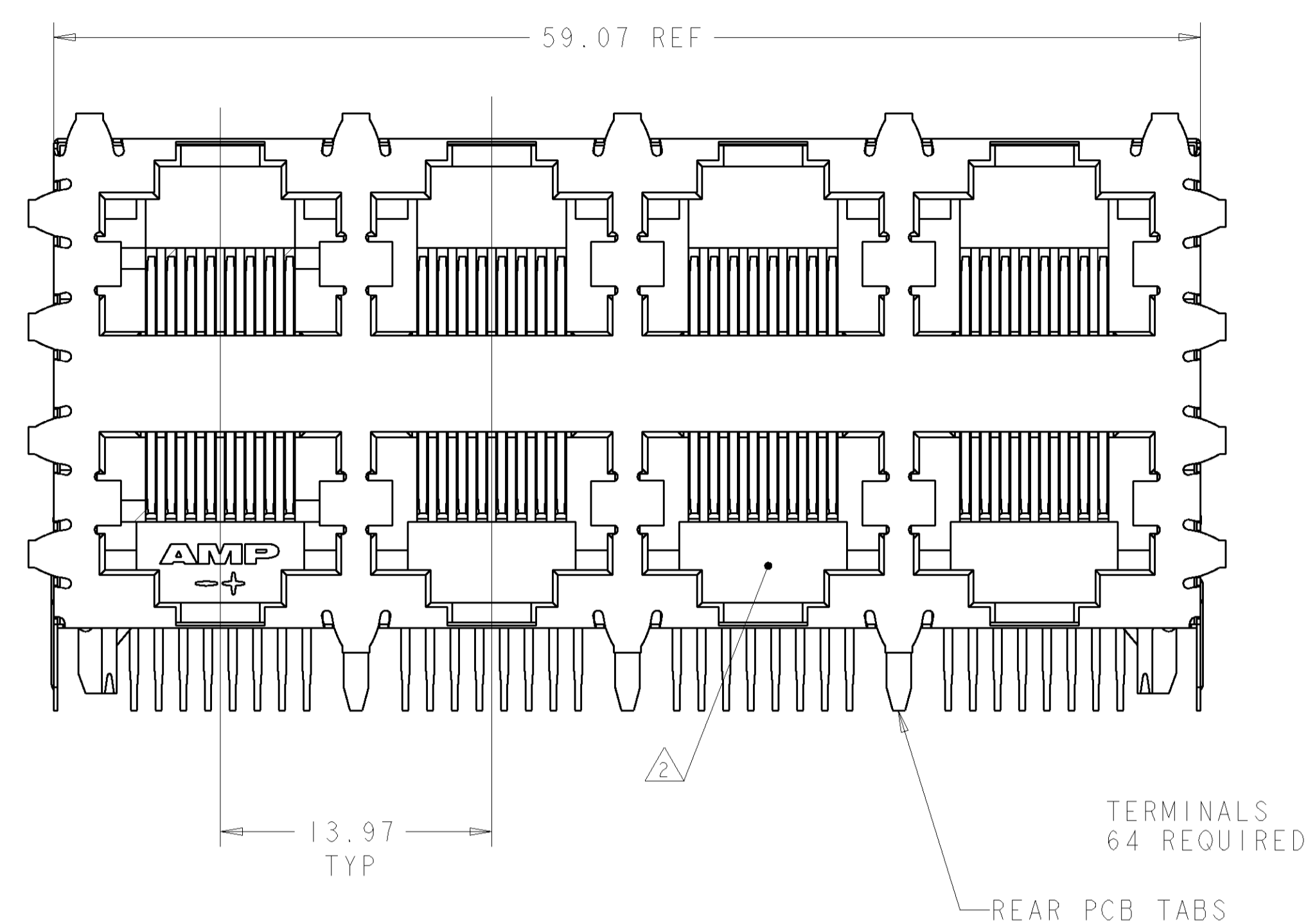
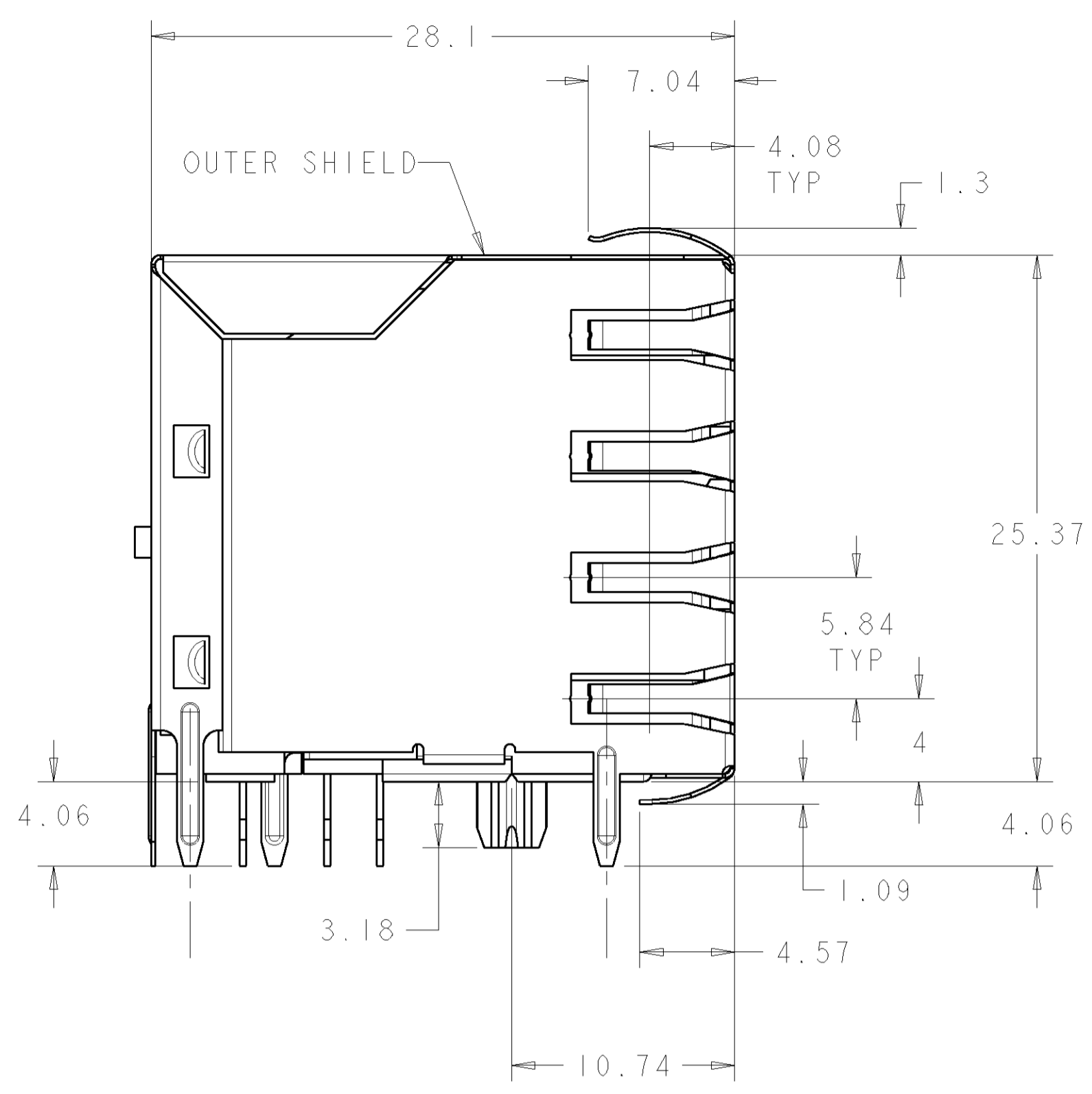
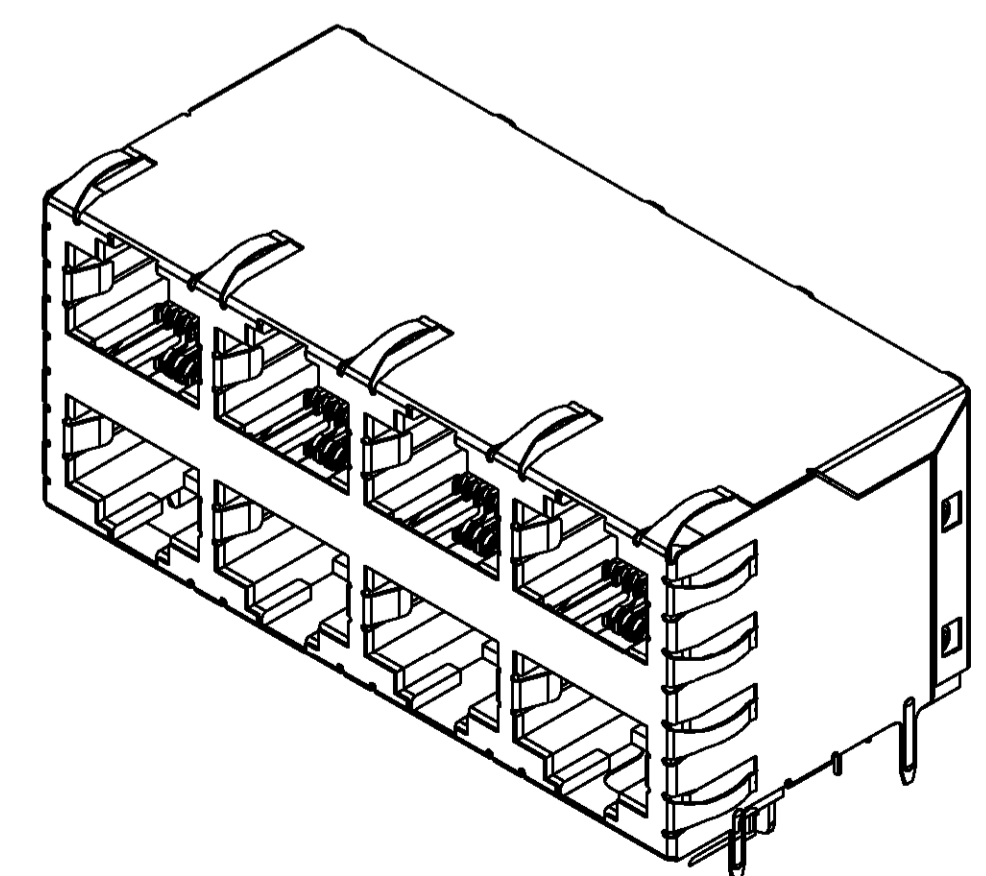
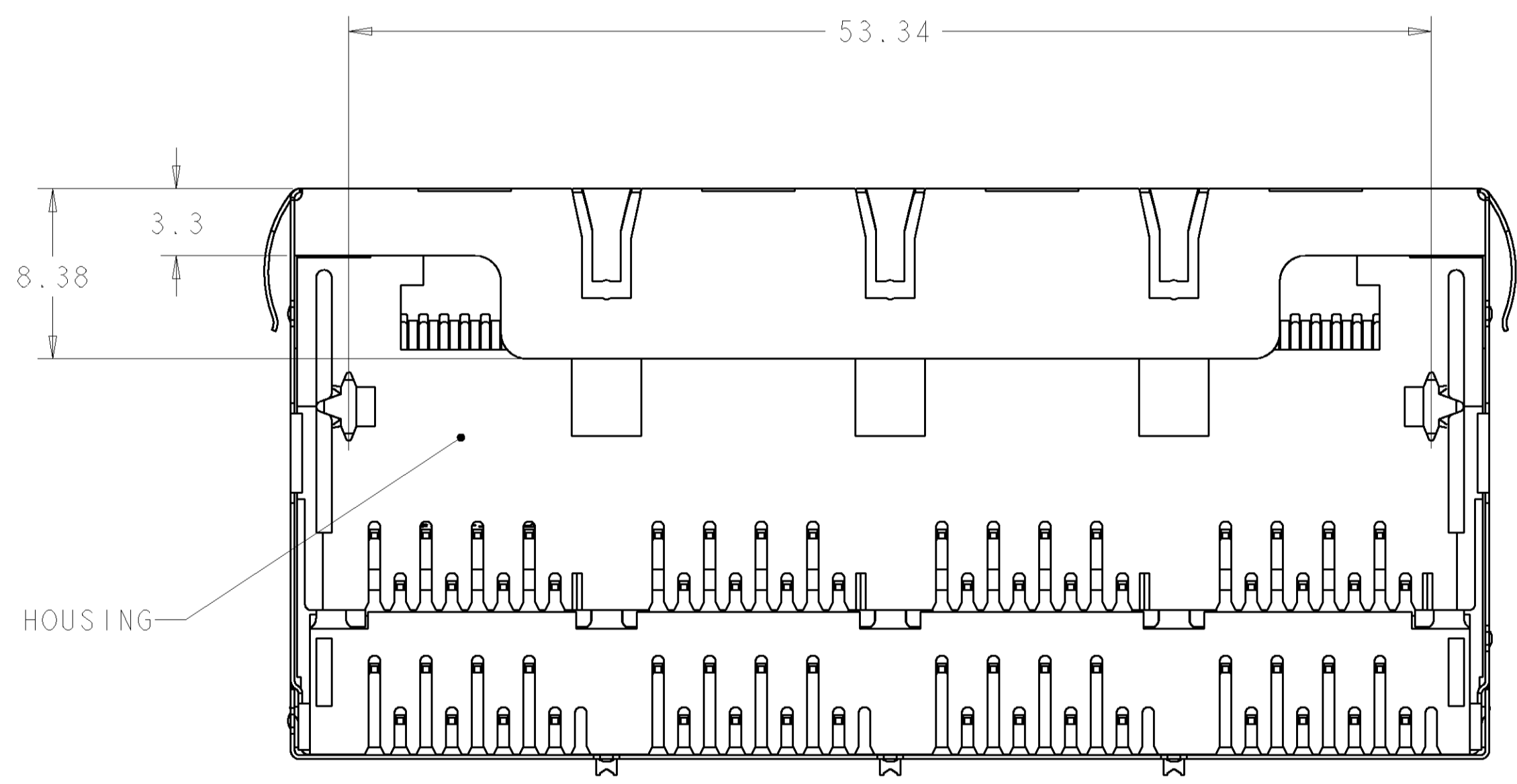


LOC	DIST	REVISIONS			
P	LTR	DESCRIPTION	DATE	DWN	APVD
A		REV PER EC 0511-0201-04	23JUN2005	LV	SF
B		REV PER ECO-07-004583	02MAR2007	RG	JW



- 1 HOUSING: PCT POLYESTER, BLACK, UL 94V-0. TERMINALS: 0.305 THICK PHOS BRONZE PLATED WITH 1.27µm MINIMUM THICK HARD GOLD IN LOCALIZED AREA AND 2.03µm MINIMUM THICK MATTE TIN IN SOLDER AREA OVER 1.27µm MINIMUM THICK NICKEL UNDERPLATE. SHIELD: 0.196 THICK COPPER ALLOY PLATED WITH 1.27µm MINIMUM NICKEL AND 2.03µm MINIMUM HOT TIN DIP ON PCB GROUND TABS.
- 2 JACK CAVITY CONFORMS TO FCC RULES AND REGULATIONS, PART 68 SUBPART F
- 3 PCB HOLES ONLY REQUIRED FOR 6339168-1
- 4 USE #30 DRILL BIT OR 3.25mm DRILL BIT WHEN PRODUCING THESE PCB HOLES
- 5. RECOMMENDED APPLICATIONS: FAST ETHERNET, 10 BASE-T ETHERNET, AND 10/100 BASE-T ETHERNET (CAT 5 TWO PAIR 1/2, 3/6)

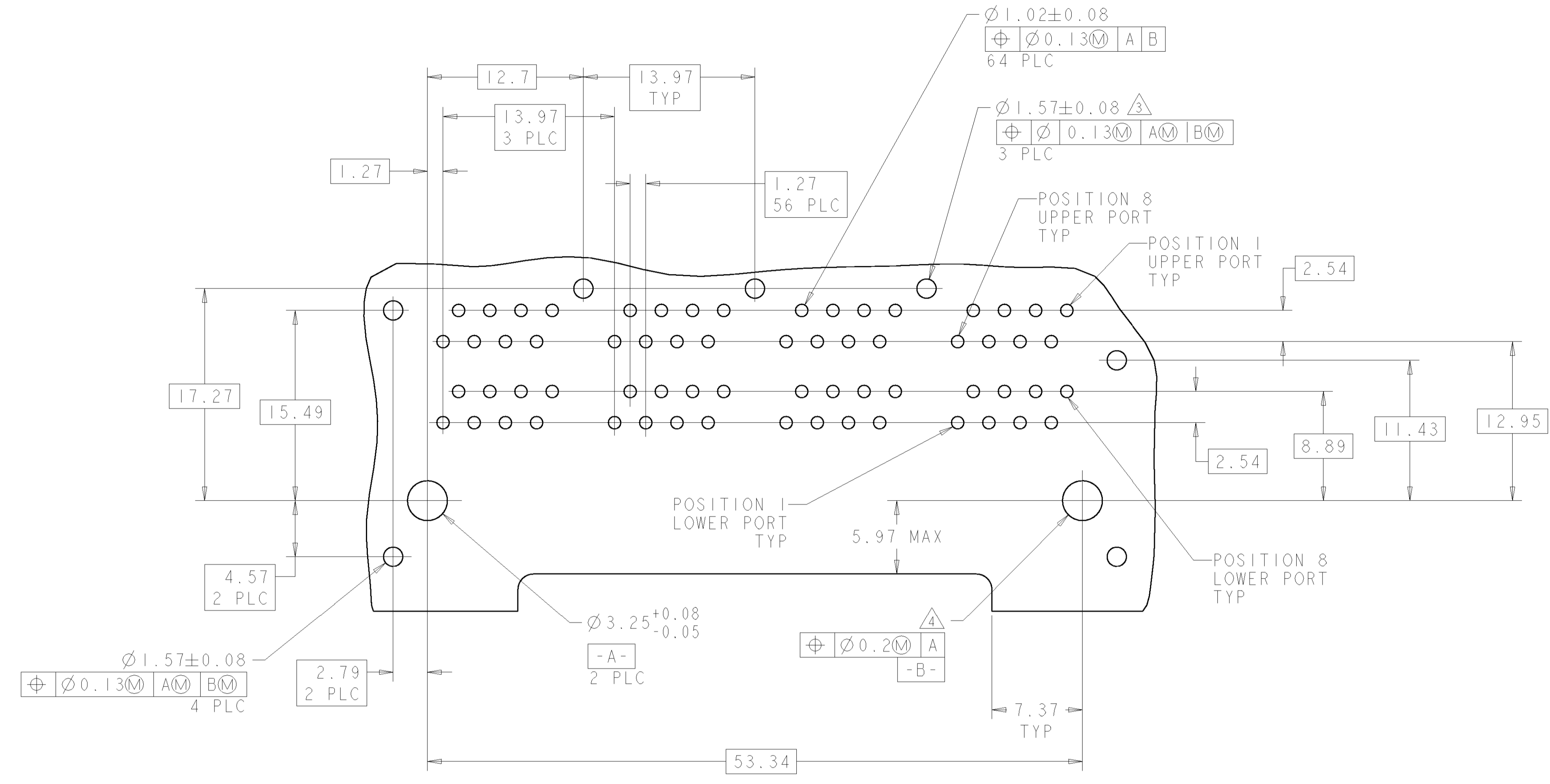


SCALE 2:1

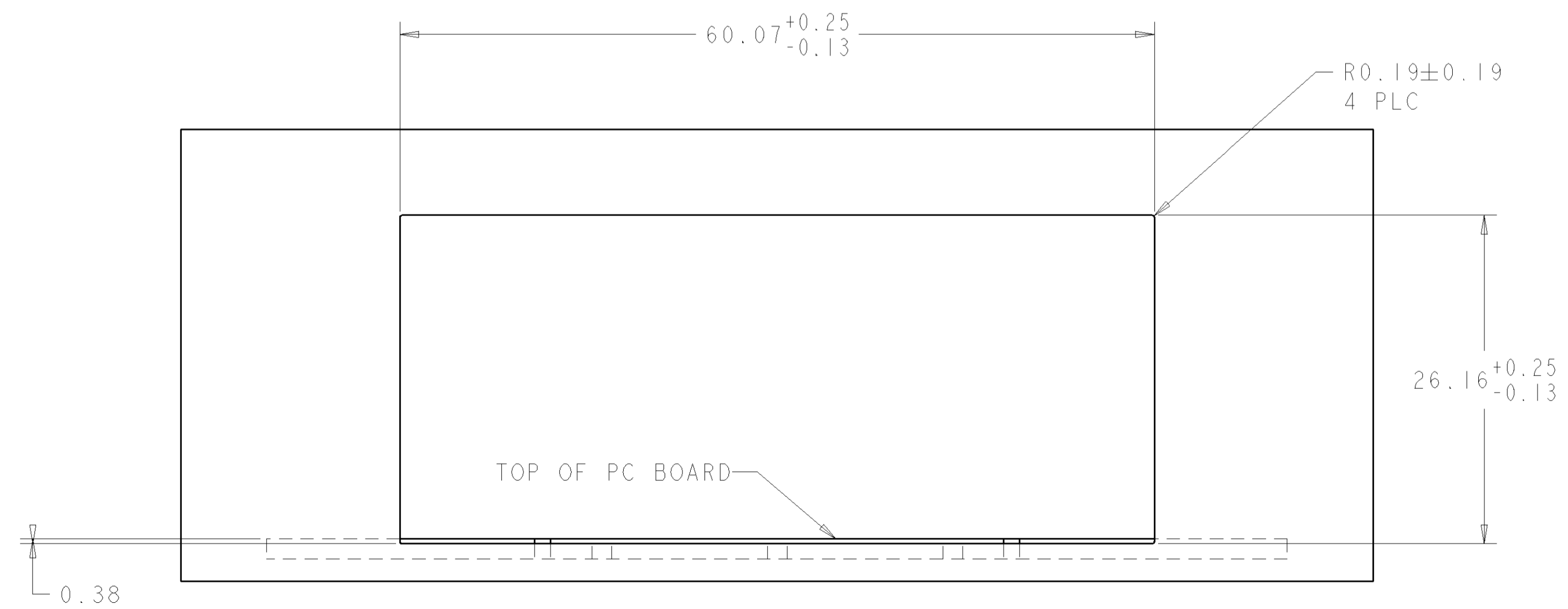
NONE	6339168-2
3	6339168-1
REAR PCB TABS	PART NO.

DIMENSIONS:		TOLERANCES UNLESS OTHERWISE SPECIFIED:		DWN: L. VARELA - 23JUN2005		ECHK: J. WESTMAN - 23JUN2005		APVD: S. FLICKINGER - 23JUN2005		NAME: S. FLICKINGER		PRODUCT SPEC: 108-1163-9		APPLICATION SPEC: 114-2048		WEIGHT: -		MATERIAL: -		FINISH: -		CUSTOMER DRAWING			
0 PLC	±.25	1 PLC	±.25	2 PLC	±.25	3 PLC	±.25	4 PLC	±.25	ANGLES	±.5	SIZE	CAGE CODE	DRAWING NO	RESTRICTED TO	A 00779 C=6339168		SCALE	4:1	SHEET	1	OF	2	REV	B

LOC		DIST		REVISIONS			
P	LTR	DESCRIPTION	DATE	BY	APPD		
-	-	SEE SHEET 1	-	-	-	-	-



PC BOARD LAYOUT VIEWED FROM COMPONENT SIDE OF BOARD
 SCALE 4:1



SUGGESTED PANEL CUTOUT DIMENSIONS
 SCALE 3:1

DIMENSIONS:		TOLERANCES UNLESS OTHERWISE SPECIFIED:		DWN		tyco		Tyco Electronics	
mm		0 PLC	±.25	L. VARELA	23 JUN 2005	DOCK 85	23 JUN 2005	Harrisburg, PA 17105-3608	
		1 PLC	±.25	J. WESTMAN	23 JUN 2005				
		2 PLC	±.25	S. FLICKINGER	23 JUN 2005				
		3 PLC	±.25						
		4 PLC	±.25						
		ANGLES	±.5						
MATERIAL		FINISH							
CUSTOMER DRAWING				SCALE	4:1	SHEET	2	OF	2
				REV	B				